

TECHNICAL DATA SHEET

ATOM-X²

TDS110



Checkmate ATOM-X² Lightweight FALL FACTOR 2 Fall Arrest Mini Block

ATOM-X is the smallest and lightest fall arrest block in its class in the world. Its lightweight chassis, PC ABS housing and webbing made with Dyneema® contribute to its outstanding strength and performance.

The ATOM-X² is a variant of the ATOM-X, which has an increased shock absorbing capability allowing the user to anchor at foot level. This is commonly referred to as a FALL FACTOR 2 situation.

By using a simple stainless steel yoke attachment system two ATOM-X's can be linked together creating a dual or twin tail device.

ATOM-X



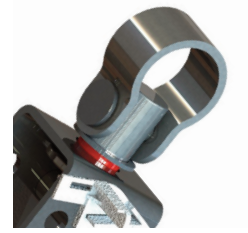
PC ABS Housing
The high strength palm-size housing is robust and durable giving protection to the mechanical assembly and internal parts.



Load Bearing Steel Chassis
The internal hot rolled steel chassis provides a structural metallic core beneath the external protective housing.



Hook Options
Alloy snaphook supplied as standard - A range of other EN & ANSI rated connectors are available upon request.



Fall Arrest Indicating Swivel
The deployment indicator on the swivel identifies if the block has been subjected to a shock load.



Dual Yoke Assembly
The ATOM-X² Dual provides for continuous connection when transferring between anchorages. Both devices work independently, and also freely rotate and swivel for correct alignment.



ordering information

Part No.	Description	Weight
ATOM-X-201	2 metre fall factor 2 mini block with alloy snap hook	0.8Kg(1.7lbs)
ATOM-X-202	2 metre fall factor 2 mini block with alloy scaffold hook	1.2Kg(2.6lbs)
ATOM-X-205	Dual 2 metre fall factor 2 mini block with alloy snap hook	1.7Kg(3.7lbs)
ATOM-X-206	Dual 2 metre fall factor 2 mini block with alloy scaffold hook	2.5Kg(5.5lbs)
ATOM-DB	Joining kit for dual assembly	0.1kg(0.2lbs)



PC/ABS Housing

High strength housing is robust and durable giving protection to the mechanical assembly.

Webbing made with Dyneema®

Lightweight with a strong resistance to cuts and abrasion. For full specification see TDS 79.

Steel Triple Lock Karabiner

Other connectors available upon request.

Fall Indicating Swivel

360 degree rotation and 180 degree pivot ensures the block remains in the correct orientation in any working condition.

The 20mm eye will enable connectivity to a range of karabiners and scaffold hooks.

Durable Shock Pack Cover

Designed for ease of use, comfort and aesthetics.

Extra Capacity Energy Absorbing Pouch

Enhanced design to ensure maximum forces do not exceed 6kN, even in a FALL FACTOR 2 situation.

product features

- ▶ **Anchorage Connection**
 11mm alloy twist lock karabiner approved to EN362, rated to 25kN
- ▶ **Webbing made with Dyneema®**
 20mm - minimum breaking load 18kN
- ▶ **Capacity**
 2 metres
- ▶ **Maximum Arresting Force**
 Webbing = <6.0kN
- ▶ **User Weight**
 136Kg Maximum

standards

- ▶ EN 360:2002

Dyneema® and Dyneema®, the world's strongest fiber™ are trademarks of DSM. Use of these trademarks is prohibited unless strictly authorized

principal materials

- ▶ **External Housings**
 PC/ABS. High strength and rigidity. UV stabilised
- ▶ **Shaft**
 Steel zinc plated & passivated
- ▶ **Chassis**
 Hot rolled steel zinc plated & passivated
- ▶ **Pawl**
 Steel, hardened - zinc plated & passivated
- ▶ **Bearing Plates**
 PTFE
- ▶ **Aluminium Snap Hook**
 23kN Minimum Breaking Load
 16kN Rated Gate



CHECKUSOUT

www.checkmateuk.com

